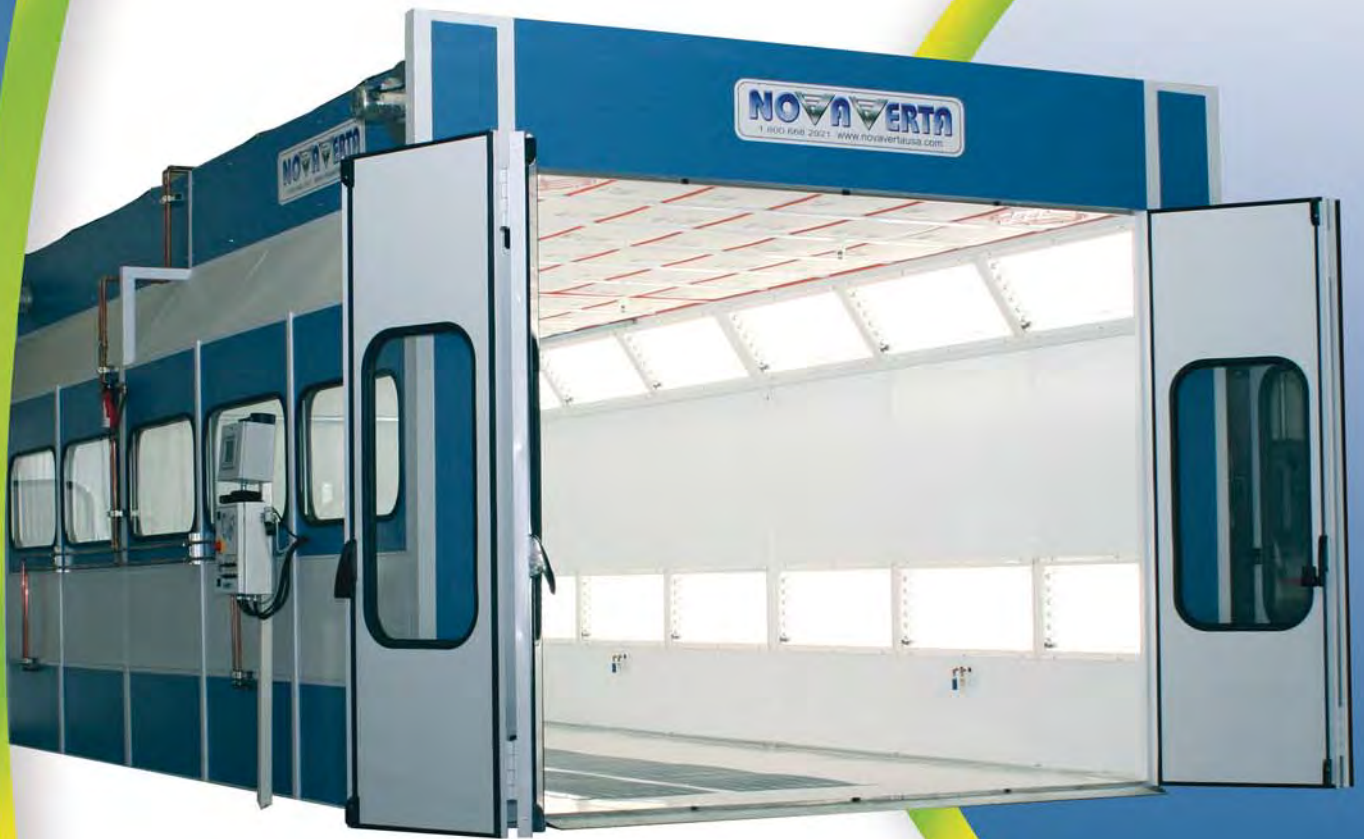


# PRESTIGE

## INDIRECT OR DIRECT-FIRED SERIES



THE  
LEADER  
IN  
SPRAY  
BOOTH  
APPLICATIONS

 **paintbooth.com**  
1-800-637-4027 *Start here, finish here!*

# ACCELERATED PRODUCTION SOLUTIONS FOR WATERBORNE PAINTS



Vortex System



Wind System



Velocity Cure

*Consult with your sales representative to determine which of these solutions will best meet your needs*

*Nova Verta USA has three solutions to accelerate production using waterborne paints: Vortex System, Wind System, and Velocity Cure.*

## Vortex System

Designed to work with any make or model of paint booth, the Vortex System is Nova Verta USA's most cost-effective solution for waterborne paints. It consists of two towers and mounting hardware specifically designed to be easy to install and fully adjust to any desired position. The towers are typically installed vertically, with one positioned at each end of booth in opposite corners. Each powerful air accelerator nozzle set at 40 PSI will use less than 12 CFM and deliver over 600 feet per minute in the center of the booth. The system also includes a CFM monitoring gauge, water filter separator, air solenoid and automated timer control, and can be installed in less than a day. The added bonus to this system is that there are no wearing parts or filtration and the nozzles can be wiped clean with any cleaning agent in 30 seconds. Return on investment in a Vortex System can be in as little as 90-120 days.

## Wind System

For purchase with a new booth or as a booth retrofit, the Wind System features four corner wall panels, each with four, adjustable air nozzles that can be easily aimed at the vehicle or parts. The Wind System also uses ceiling filters to channel pre-heated and filtered cabin air through ductwork to specially-designed blowers located on the exterior of the paint booth. The blowers expedite air velocity and distribute the amplified air to the Wind System's corner wall panels, achieving additionally heated or non-heated air speeds over 400 feet per minute. When not in use, the nozzles are covered by a sealed door to prevent overspray contamination. Purchased with a new booth, the Wind System is automatically controlled through the touch screen operator station, eliminating additional power runs to a separate control panel. The times are fully adjustable and can also be used in cure mode, shortening cure times and thus saving energy and excelling production capability. The system can also be purchased at a later date and easily added if set up with Wind System Ready when purchasing a new booth with the nozzle panels already in your new booth.

## Velocity Cure

If a new booth is in your budget, the Velocity Cure is ideal for select applications. This downdraft paint booth system provides increased airflow that can cut flashing time in half, raise paint surface temperature for baking several minutes faster, and slash cure times by half or more. Velocity Cure operates without adjustable blow nozzles or additional fans, helping ensure cleaner paintwork and trimming the need for cutting and polishing.



Allen-Bradley Color Touch Screen with Indirect-Fired Systems



Siemens Touch Screen with Direct-Fired Systems

4-Tube Lighting Package

The energy and maintenance savings offered by Prestige Series paint spray booths make this model the premier choice for consumers looking at the entire paint booth buying decision – lighting, performance, and operating costs.

### Lighting

The Prestige Series offers our best cabin lighting package. The Prestige 27' cabin features 23 Class I, Division II light fixtures with four 98CRI - T8 tubes and multi-voltage, energy efficient, electronic ballasts. These same features are provided by the optional six-tube fixtures for applications requiring enhanced visibility. The inside access fixtures horizontally line both side walls and hip angles. These continuous lighting banks produce up to 50% more measured light output than any booth on the market, providing unobstructed and unprecedented illumination.

### Performance & Operational Savings

The Prestige Series offers the choice of indirect or direct-fired heating with a designed airflow that equals competitive designs that use 50% more horse power. The Prestige Series also provides

the best laminar airflow in the industry. Optional controller technology, variable frequency drives, self-diagnostics, and energy savings controls give you the power and information you need to maximize production *and* minimize operating expenses.

### Indirect-Fired

Nova Verta's indirect-fired system controls provide three distinct operating cycles: prep, paint, and cure. The automated pressure control uses a variable frequency drive (VFD) on the exhaust fan. During the prep and cure cycles, this configuration is proven to conserve energy by recirculating 90% of the warmed airflow – saving 35% on utility costs and filtration expenses when compared to



Quality Designed Door Hardware



Raised Base with Inside Ramp

typical direct-fired systems and 25% over the newer, economic direct-fired systems using a VFD. Plus, the prep cycle, which is exclusive to Nova Verta, prevents operators from being exposed to the dangers of carbon monoxide. Nova Verta's indirect-fired solutions also have lower humidity output, which promotes quicker drying of waterborne paints.

The Prestige Series indirect-fired booths use an Allen-Bradley control system, featuring a 600 Color Touch Screen series Class I Division II remote mount operator station mounted in booth wall or other desired locations such as mix room entry.

Optional Auto Prep Mode System (APMS) automatically shifts booth into prep mode after desired timer set point and returns to spray cycle upon spray gun activation.

### Direct-Fired

The standard direct-fired system also has automated pressure control. It features 1.1 million BTU with a 100° temperature rise in the spray cycle. The Prestige Series direct-fired units recirculate 90% of the booth's warm air during cure cycle.

The direct-fired models use a Siemens touch screen operator station. An optional energy saving system (ESS), with a dual VFD and an automated economy cycle slows air speed when not spraying to conserve fuel and electricity usage.

### Booth Construction

With pre-coated, galvanized, dual panel construction, two inches of insulation, tubular steel center, door hardware, sealing material, and nut and bolt assembly, Nova Verta paint booths are built to last.

Factory pre-wiring expedites the installation of Nova Verta paint booth systems. Color-coded and labeled wiring in Seal Tite conduit, and easy-to-read installation manuals minimize the need for electrical contractors and reduce set-up time and expense.



Stainless Steel Heat Exchanger



Dual Fan - Dual Inlet (Optional)

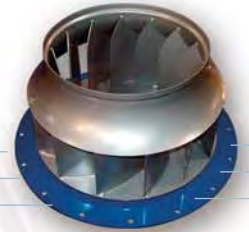
# F I R E D S E R I E S



*Direct-Fired AMU*



*Post Filtration System (Optional)*



*Direct Drive 10 HP Turbine Exhaust Fan*



*6-Tube Light Fixture (Optional)*



*Prewired Control System Utilizing VFD For Pressure Control*



*Indirect-Fired AMU*



*Dual Inlet Hi-Capacity Low DB (Make-up Air Fan 10 HP)*



*Midco Direct-Fired Burner*

# PRESTIGE INDIRECT OR DIRECT-FIRED SERIES

Some of our installation sites include:

## Product Details

### Standard Cabin Dimensions<sup>†</sup>

#### Length

24, 27, 29 or 31'

#### Width

13'-4 5/8" or 14'-8 1/2"

#### Height

10'-9" or 11'-8 3/8"

Basement and semi-downdraft options add additional height

<sup>†</sup>These are nominal dimensions and should not be used for planning purposes. Please contact Nova Verta for detailed drawings and specifications tailored to your installation.

### Controllers

#### Indirect-fired:

- Allen-Bradley, Color Touch Screen
- Rated for Class I Division II hazardous locations

#### Direct-fired:

- Siemens Touch Screen
- Rated for Class I Division II hazardous locations

### Light Fixtures

- 4 tubes - Inside access Class 1 Division 2

### Options

- Vortex System
- Wind System for faster flashing and cure times
- Wind System Ready (allowing for future addition of Wind System)
- Velocity Cure
- Energy Savings System (ESS) (for direct-fired systems only)
- Auto Prep Mode System (APMS) (for indirect-fired system only)
- Light fixture: 6 tubes - Inside access Class 1 Division 2
- Post filtration extractor
- 3-row tunnel pit
- Dry filter basement raises booth and equipment 16"
- Inside ramp
- Drive-through door
- Side exit door (additional or for drive-through)
- 480 volt motors, 277 volt lighting, and 120-volt controls and burner
- Electric roll-up door for automotive booth
- Electric side roll-up door
- Viewing window side wall
- Additional sizing and configurations are available upon request
- Indirect or direct-fired air make up unit  
(Note: ANSI standards do not permit a recirculating Prep cycle with a direct-fired system)

### Code Compliance

Most products are ETL Listed for their intended purpose to meet IFC, IBC, IEC, IMC, NFPA 33, 70, 86, 91, 101, UL508A, ANSI, and OSHA standards



Abbott Street - Salinas, CA



Artistic Auto Body - Tigard, OR



Ganassi Racing - Concord, NC



Elite Collision Center - Tempe, AZ



Exhibit Works - Livonia, MI



Auto Carrozzeria - Italy



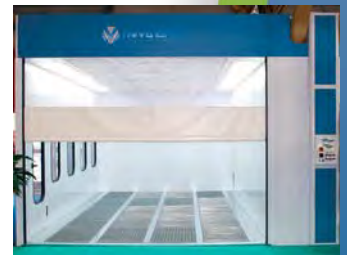
The Auto Body Work Shop - Sacramento, CA



5000 - 3000 Prep Station - Sweden



Balise Auto Group - West Springfield, MA



3005 Single Prep Station

